

Fords.

SALES | LETTINGS | NEW HOMES

Marlow Road High Wycombe HP11 1TE



Marlow Road High Wycombe HP11 1TE

Asking price £235,000

Situated on the sought-after Marlow Road, this spacious two-bedroom duplex apartment offers approximately 737 sq ft of well-presented accommodation arranged over two floors, together with the benefit of a private balcony and an excellent location close to High Wycombe town centre and transport links.

Description

Accessed via its own private entrance, the property provides a rare duplex layout that creates a house-like feel. The first floor features a bright and generously sized reception/dining room measuring over 14ft in length, with direct access to a private balcony, providing an ideal space for relaxing or entertaining. A separate fitted kitchen offers ample storage and workspace.

The second floor comprises two well-proportioned bedrooms, including a spacious principal bedroom with built-in storage and a further bedroom ideal for guests, children or home working. A family bathroom completes the accommodation.

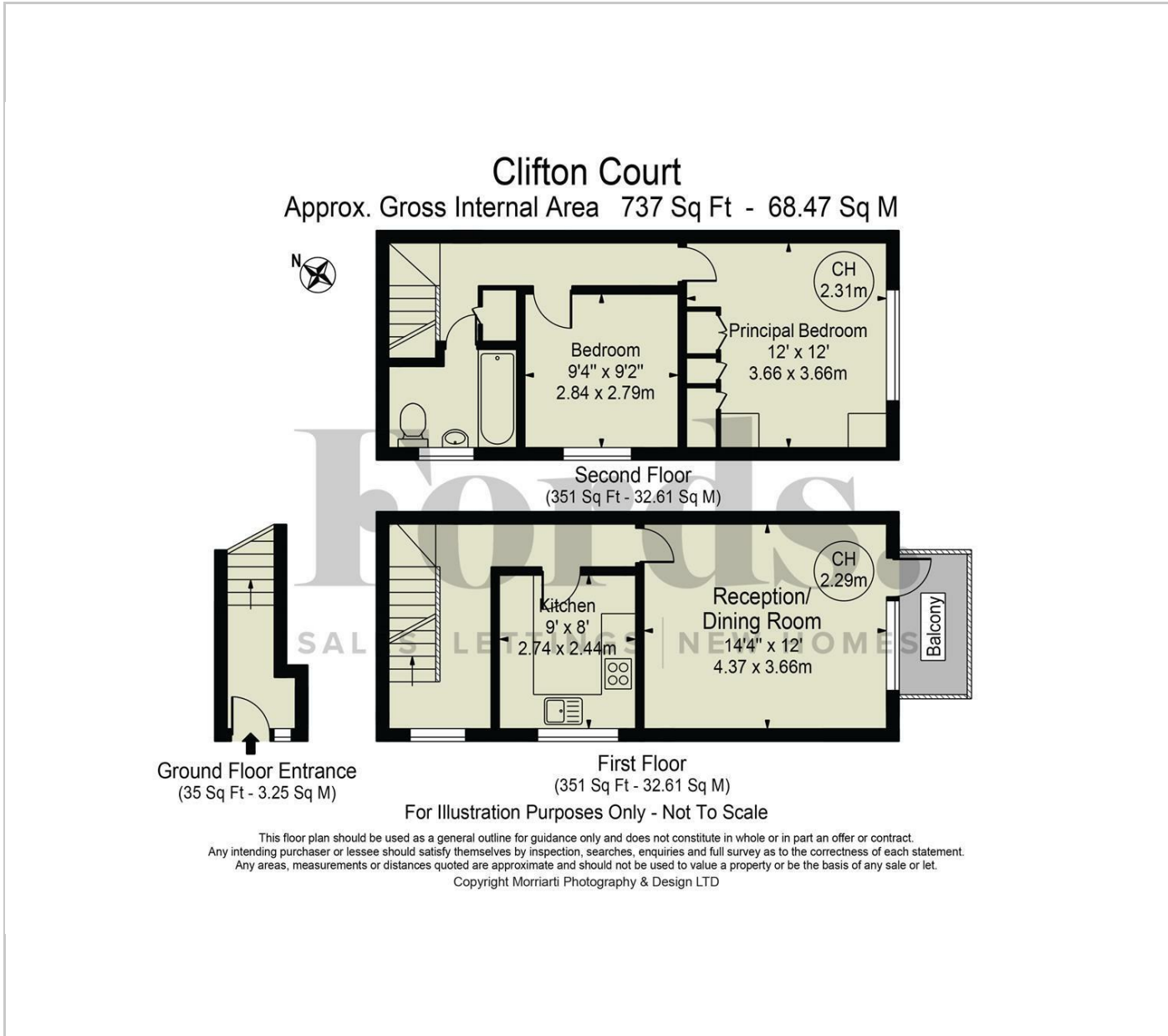
Conveniently positioned for local amenities, High Wycombe railway station and the M40 motorway, this attractive property would make an ideal first-time purchase, investment opportunity or home for professionals seeking excellent commuter connections.

Situation

Marlow Road is a well-regarded residential location situated within easy reach of High Wycombe town centre, offering an excellent range of shopping, leisure and dining facilities. The area is particularly popular with commuters thanks to its convenient access to High Wycombe railway station, providing regular services to London Marylebone, and the nearby M40 motorway. Residents also benefit from a selection of highly regarded schools, local parks and recreational amenities, while the picturesque Chiltern Hills Area of Outstanding Natural Beauty is just a short distance away, offering an abundance of countryside walks and outdoor pursuits.



Floor Plans



Area Map



Energy Performance Graph

